



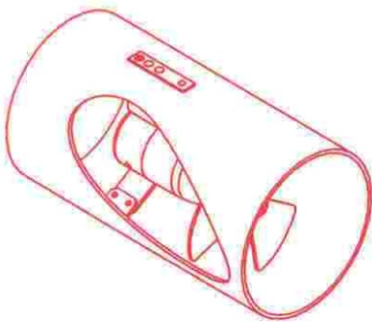
**LANTEK  
HIDRAULICA S.L.**  
Equipos y Sistemas Hidráulicos

## PROPULSEUR TRANSVERSAL Type 450

### DESCRIPTIF:

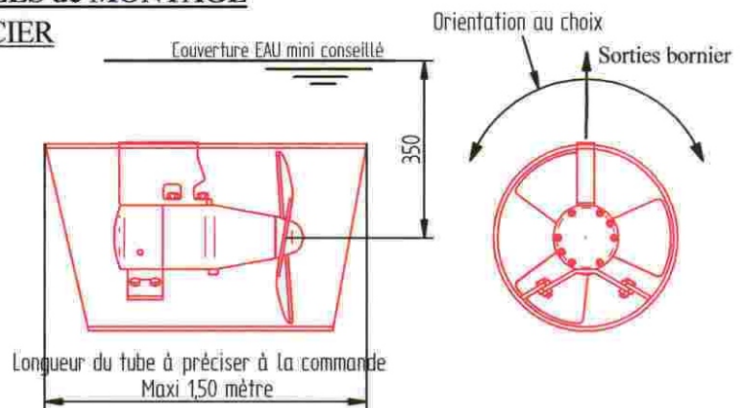
Entrainement direct de l'hélice par moteur hydraulique a pistons.  
Grande souplesse d'installation et d'utilisation.  
Possibilité d'alimentation depuis centrale hydraulique de bord existante.  
Possibilité classification Bureau VERITAS. (sur demande)  
Version acier standard ou version aluminium et stratifiable sur demande.  
Hélice 3 pales symétrique en LHR ou AG6.

### VERSION EN TUNNEL

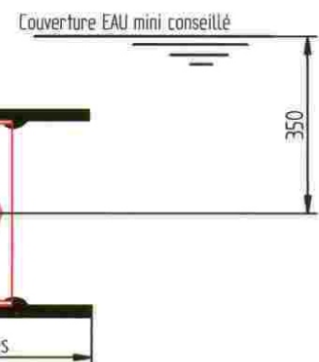


### EXEMPLES de MONTAGE

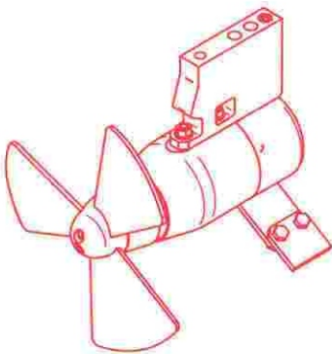
#### TUBE ACIER



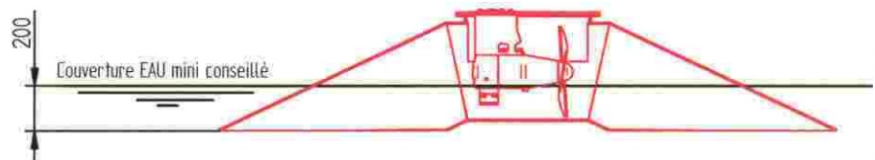
#### TUBE STRATIFIABLE



### VERSION NUE



#### TUBE OBLIQUE



### CARACTERISTIQUES TECHNIQUES

Puissance maxi absorbée a  $\Delta P$   
Débit maxi admissible  
Poussée maxi + ou- 10%  
Diametre hélice  
Contre pression maxi sur orifice de drain

Version $\Delta P$ 210 bar	Version $\Delta P$ 300 bar
30 KW	37 KW
80 L/mn	70 L/mn
370 KG	450 KG
340 mm	340 mm
2 bar	2 bar

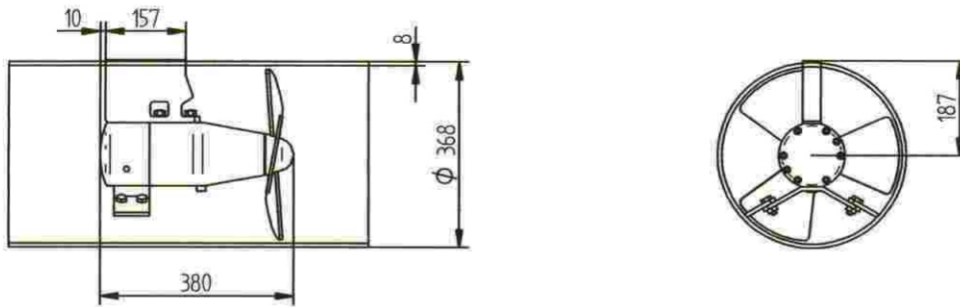
### VERSION ACIER ou STRATIFIABLE:

Tube diametre 368 ep 8 mm  
selon API 5L grade B  
Poids: 80 KG + 90 KG/metre de tube

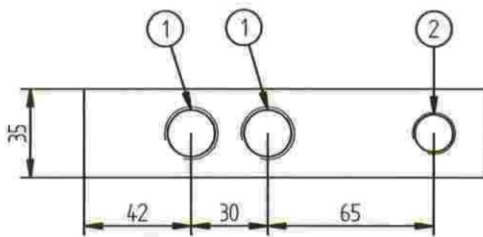
### VERSION ALUMINIUM

Tube diametre 370 ep 10 mm AG4  
soudé longitudinalement  
Poids: 65 KG + 33 KG/metre de tube

## ENCOMBREMENTS



## BORNIER de RACCORDEMENTS



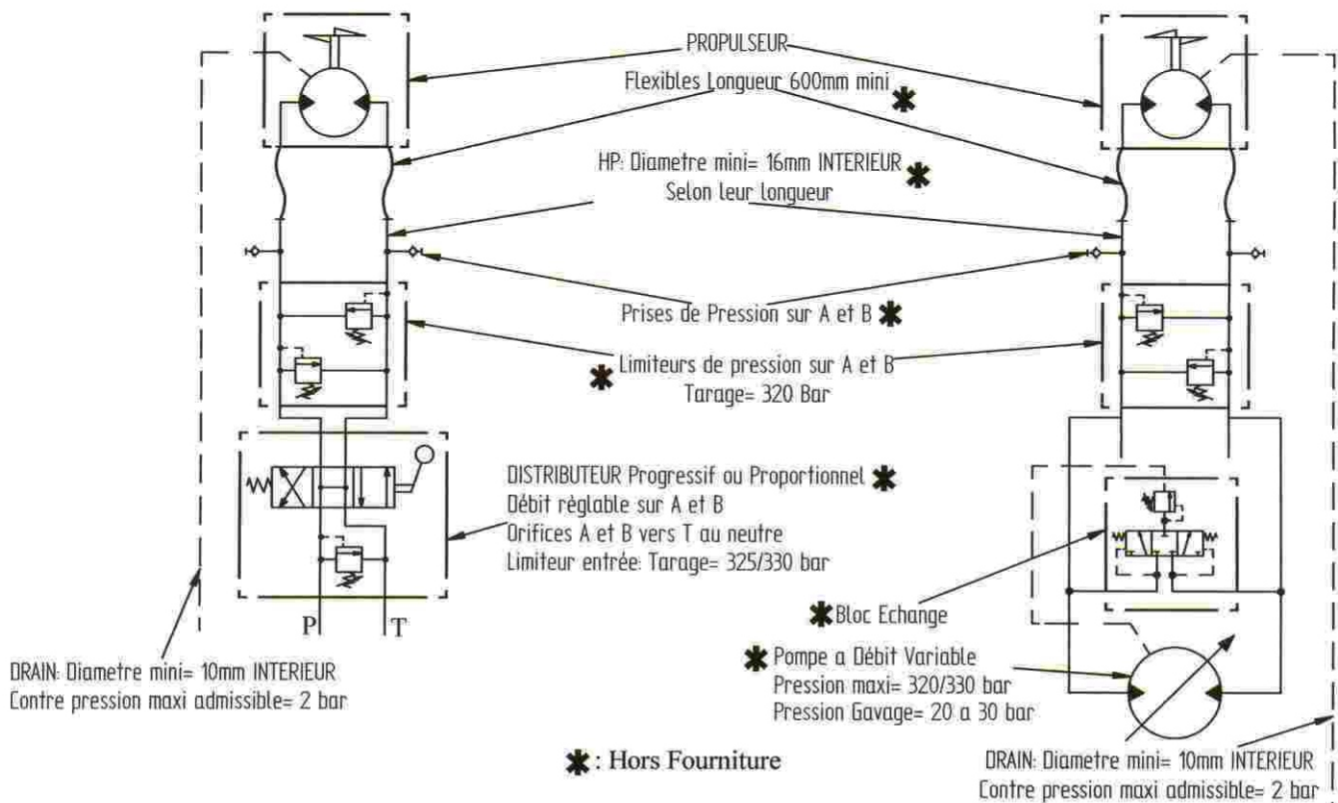
Rep 1: 2x HP: 1/2 Gaz Femelle  
 Rep 2: 1xDRAIN: 3/8 Gaz Femelle

**NOTA:** en aucun cas les obturateurs des orifices d'alimentations ne seront démontés avant raccords définitifs ceci afin d'éviter tous risques de pollutions accidentelles.

## SCHEMAS HYDRAULIQUES de PRINCIPE

### CIRCUIT OUVERT

### CIRCUIT FERME



**IMPORTANT:** Propreté minimale des circuits classe 7 a 8 selon NAS 1638 (ou 5 a 6 selon ASTM)

Document N° 450-02

Sous Réserves de modifications résultant de progrès techniques, illustrations dimensions performances et poids NON CONTRACTUELS

Landeta Kalea 2, PB 8 - Pol. Ind. Trobika - 48100 Mungia - BIZKAIA (Spain)  
 Tel: 94 674 21 62 - Fax: 94 674 21 63 - E-mail: lantekhidraulica@lantekhidraulica.com





**LANTEK  
HIDRAULICA S.L.**

Equipos y Sistemas Hidráulicos

**Préliminary**

## TRANSVERSE THRUSTER Type 500

### DESCRIPTION:

Direct propeller driving by piston hydraulic motor

Easy installation and utilisation

Possibility of supply from existent board hydraulic unit

Bureau VERITAS classification possibility

Standard model: steel tunnel-Option: aluminium tunnel or tunnel for plastic integration

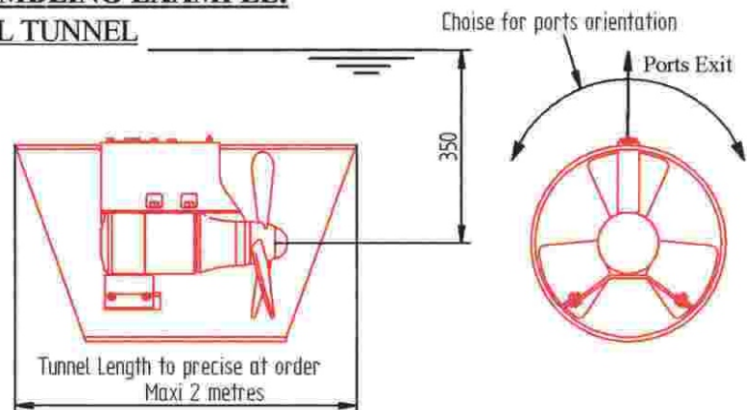
Propeller: 3 blades symmetric LHR or AG6

### TUNNEL VERSION

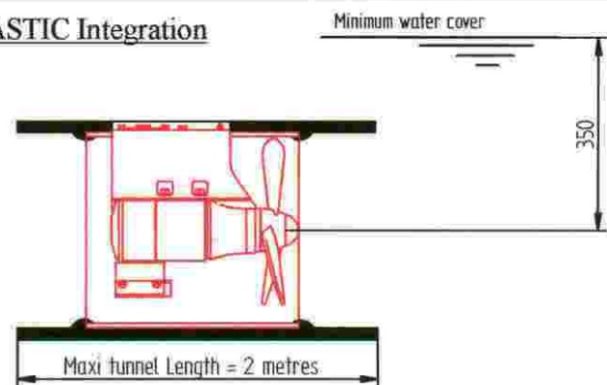


### ASSEMBLING EXAMPLE:

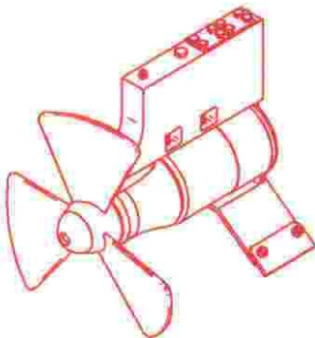
#### STEEL TUNNEL



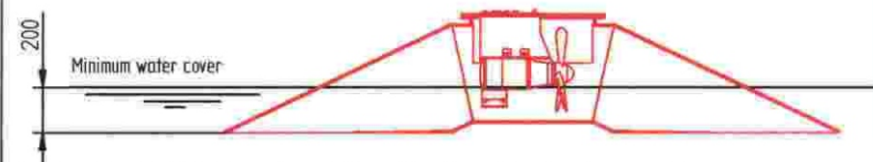
#### TUNNEL for PLASTIC Integration



### NAKED VERSION



#### OBLIQUE TUNNEL



### TECHNICAL CHARACTERISTICS

Max absorbed power for  $\Delta P$

Max acceptable flow

Max thrust + or- 10%

Propeller diameter

Max pressure on drain port

Version $\Delta P$ 210 bar	Version $\Delta P$ 325 bar
42 KW	48 KW
110 L/mn	80 L/mn
500 KG	600 KG
340 mm	340 mm
2 bar	2 bar

### STEEL or PLASTIC Integration VERSION :

Tunnel Diameter 368 th 10 mm

Longitudinal welded as API 5L grade B

Weight: 80 Kg + 90 Kg/tunnel metre

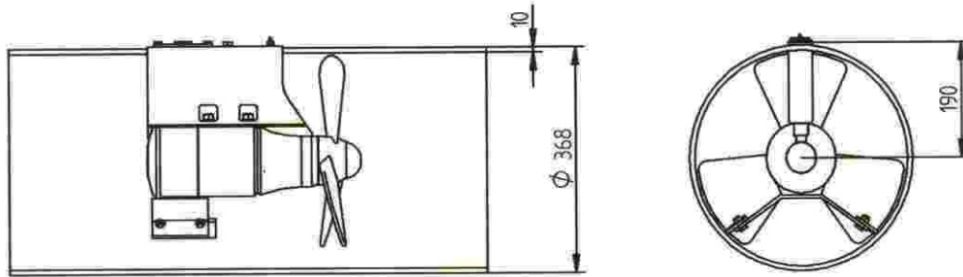
### ALUMINIUM VERSION :

Tunnel diameter 370 th 10 mm AG4

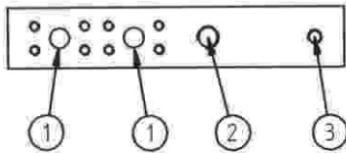
longitudinal Welded

Weight: 65 Kg + 33 Kg/tunnel metre

## DIMENSIONS



## CONNECTION PORTS



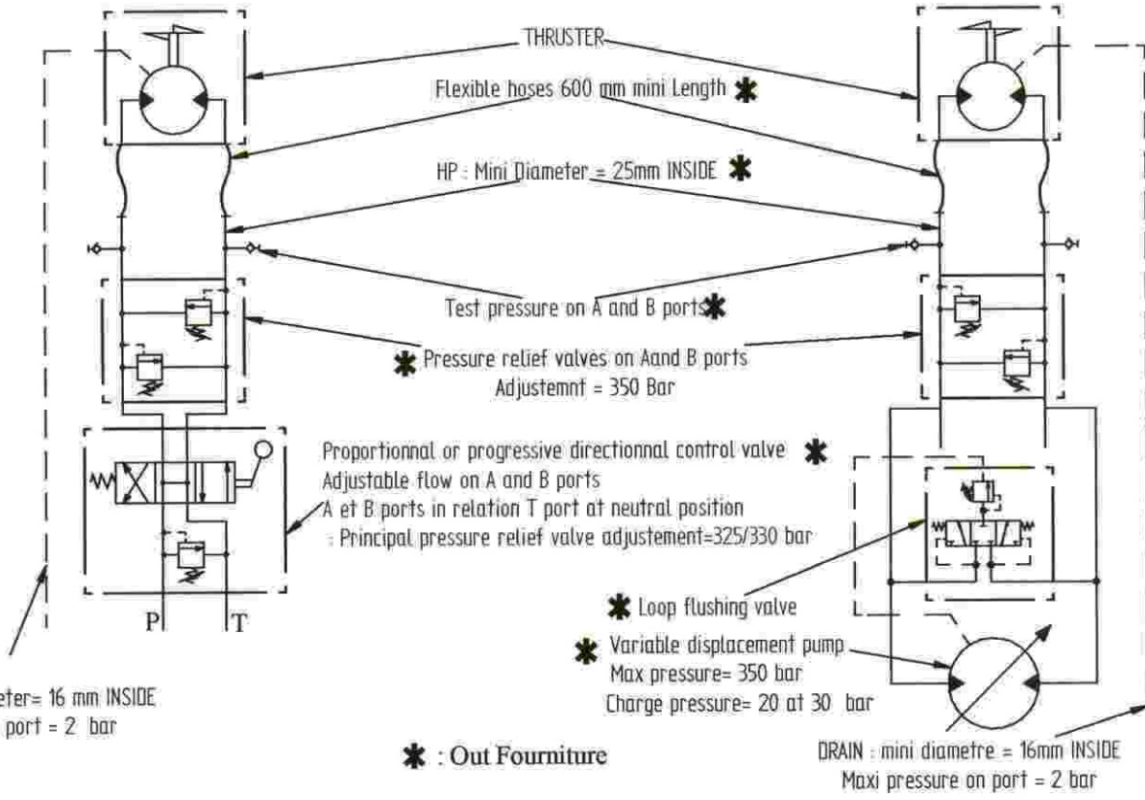
Rep 1: 2x HP: SAE 3/4-6000  
 Rep 2: 1xDRAIN: 3/8 Gaz Female  
 Rep 3: 1xGreasing : 1/4 Gaz Female

**NOTA:** in any case ports caps will not be dismantled before definitive connexion to prevent accidental pollutions

## HYDRAULIC DIAGRAM

### OPEN CIRCUIT

### CLOSED CIRCUIT



DRAIN: mini diameter= 16 mm INSIDE  
Max pressure on port = 2 bar

DRAIN : mini diametre = 16mm INSIDE  
Maxi pressure on part = 2 bar

**IMPORTANT:** minimum cleanliness circuit as NAS 1638 7 to 8 class (or 5 a 6 as ASTM)

Document N° 500-02 Preliminary

With reserve for modifications result to technicals progress : illustrations, dimensions, performances and weight are NOT CONTRACTUAL

Landeta Kalea, 2 PB 8 - Pol. Ind. Trobika - 48100 Mungia - BIZKAIA (Spain)  
Tel: 94 674 21 62 - Fax: 94 674 21 63 - E-mail: [lantekhidraulica@lantekhidraulica.com](mailto:lantekhidraulica@lantekhidraulica.com)





**LANTEK  
HIDRAULICA S.L.**

Equipos y Sistemas Hidráulicos

**TRANSVERSE THRUSTER Type 800**

**DESCRIPTION:**

Direct propeller driving by piston hydraulic motor

Easy installation and utilisation

Possibility of supply from existent board hydraulic unit

Bureau VERITAS classification possibility

Standard model: steel tunnel-Option: aluminium tunnel or tunnel for plastic integration

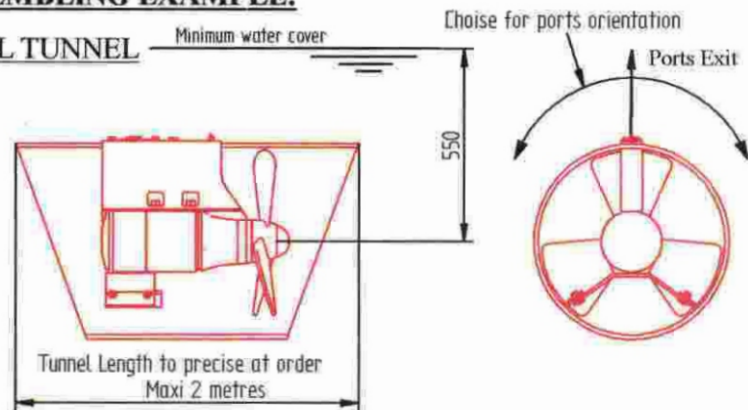
Propeller: 3 blades symmetric LHR or AG6

TUNNEL VERSION

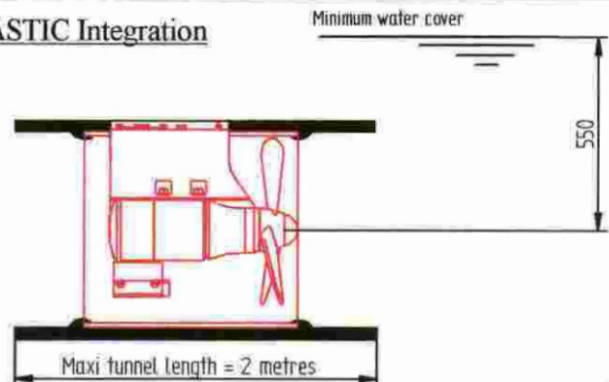


**ASSEMBLING EXAMPLE:**

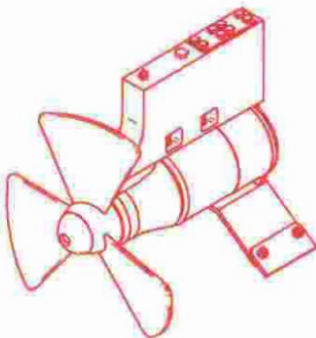
STEEL TUNNEL



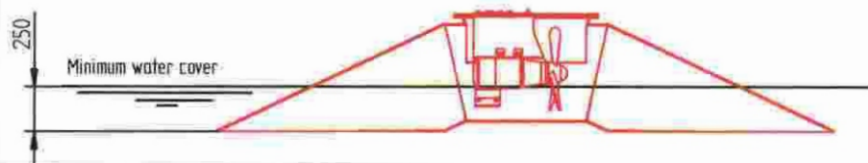
TUNNEL for PLASTIC Integration



NAKED VERSION



OBLIQUE TUNNEL



**TECHNICAL CHARACTERISTICS**

Max absorbed power for  $\Delta P$

Max acceptable flow

Max thrust + or- 10%

Propeller diameter

Max pressure on drain port

Version $\Delta P$ 210 bar	Version $\Delta P$ 325 bar
54 KW	73 KW
140 L/mn	120 L/mn
650 KG	900 KG
520 mm	520 mm
2 bar	2 bar

**STEEL or PLASTIC Integration VERSION :**

Tunnel Diameter 559 th 12.5 mm

Longitudinal welded as API 5L grade B

Weight: 110 Kg + 170 Kg/tunnel metre

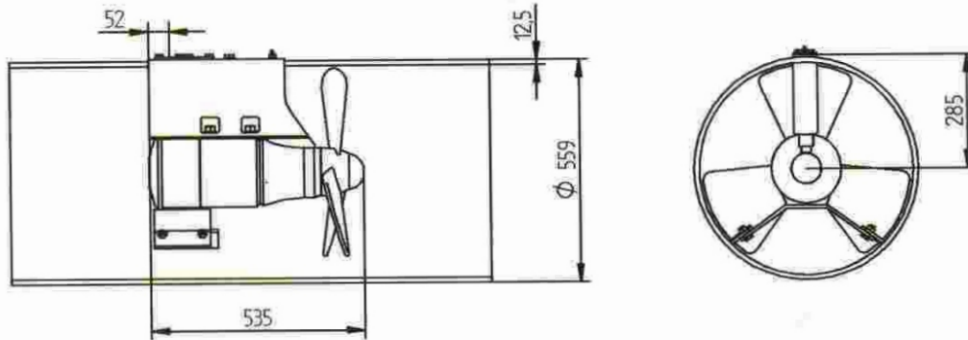
**ALUMINIUM VERSION :**

Tunnel diameter 560 th 12mm AG4

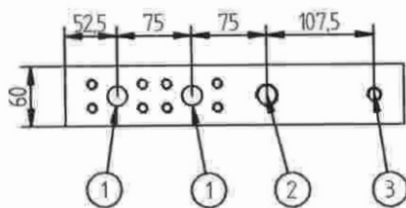
longitudinal Welded

Weight: 100 Kg + 50 Kg/tunnel metre

## DIMENSIONS



## CONNECTION PORTS



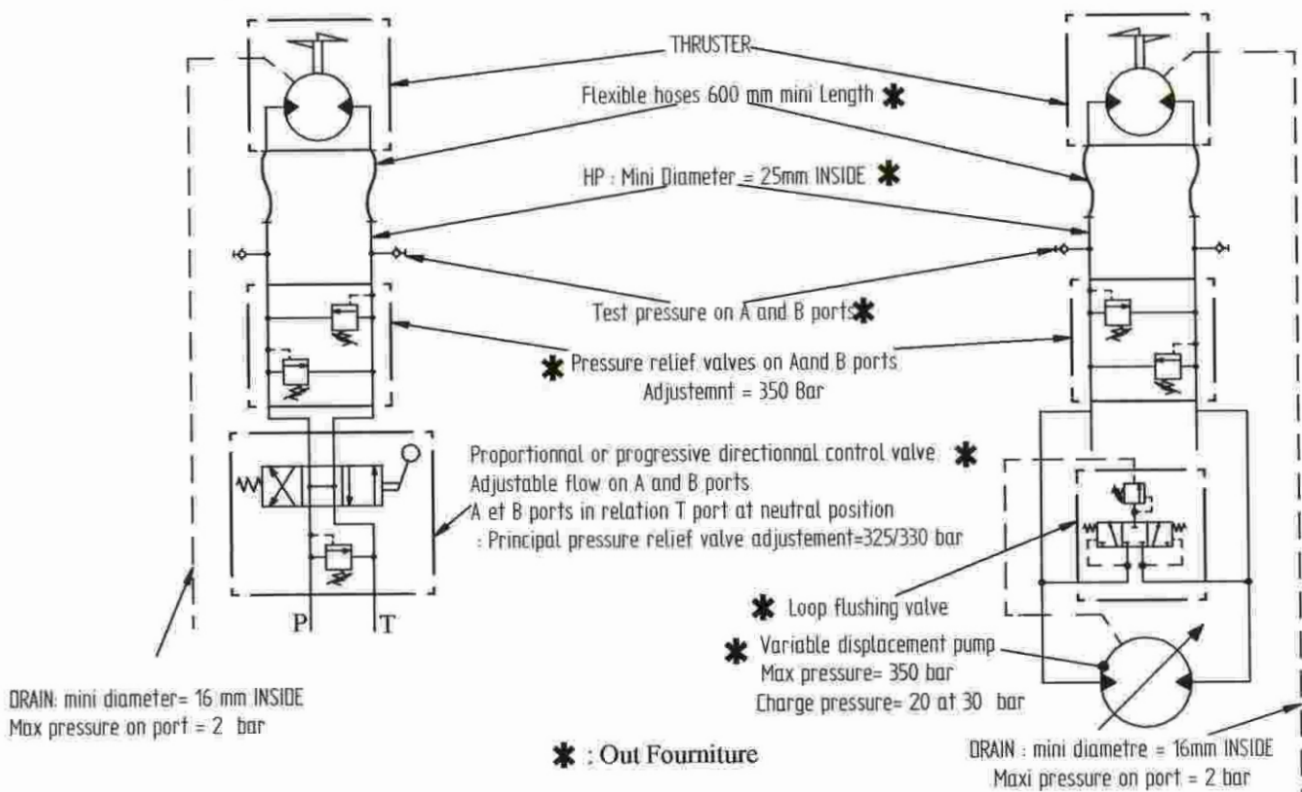
Rep 1: 2x HP: SAE 3/4-6000  
 Rep 2: 1xDRAIN: 1/2 Gaz Female  
 Rep 3: 1xGreasing : 1/4 Gaz Female

**NOTA:** in any case ports caps will not be dismounted before definitive connexion to prevent accidental pollutions

## HYDRAULIC DIAGRAM

### OPEN CIRCUIT

### CLOSED CIRCUIT



**IMPORTANT:** minimum cleanliness circuit as NAS 1638 7 to 8 class (or 5 a 6 as ASTM)

Document N° 800-02

With reserve for modifications result to technicals progress : illustrations, dimensions, performances and weight are NOT CONTRACTUAL

Landeta Kalea, 2 PB 8 - Pol. Ind. Trobika - 48100 Mungia - BIZKAIA (Spain)  
 Tel: 94 674 21 62 - Fax: 94 674 21 63 - E-mail: lantekhidraulica@lantekhidraulica.com





## TRANSVERSE THRUSTER Type 950

**DESCRIPTION:**

Direct propeller driving by piston hydraulic motor

Easy installation and utilisation

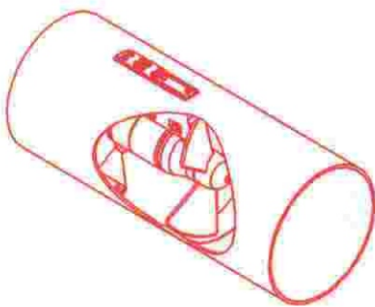
Possibility of supply from existent board hydraulic unit

Bureau VERITAS classification possibility

Standard model: steel tunnel-Option: aluminium tunnel or tunnel for plastic integration

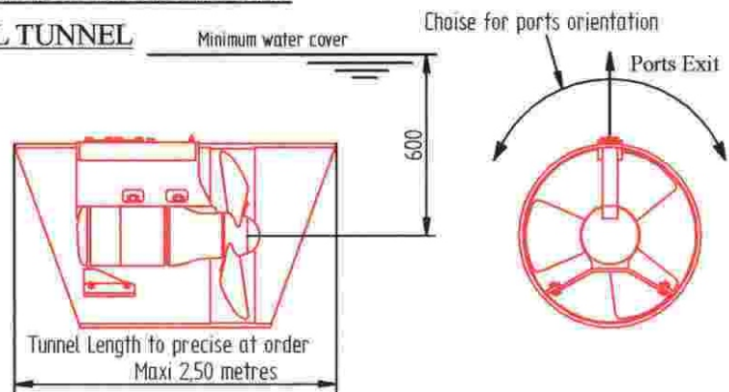
Propeller: 3 blades symetric LHR or AG6

TUNNEL VERSION

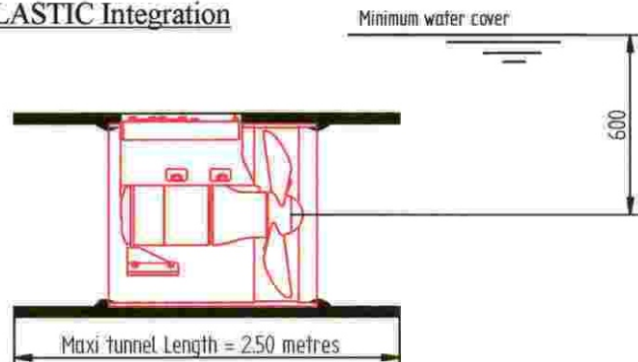


**ASSEMBLING EXAMPLE:**

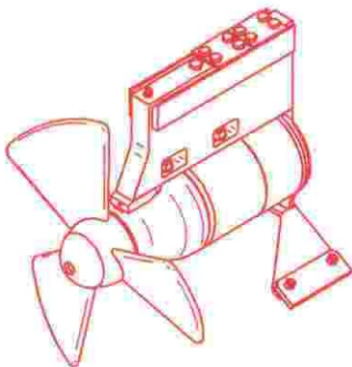
STEEL TUNNEL



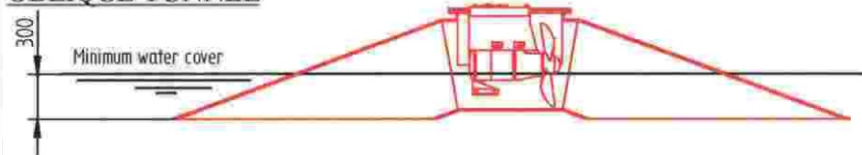
TUNNEL for PLASTIC Integration



NAKED VERSION



OBLIQUE TUNNEL



**TECHNICAL CHARACTERISTICS**

Max absorbed power for  $\Delta P$   
 Max acceptable flow  
 Max thrust + or- 10%  
 Propeller diameter  
 Max pressure on drain port

Version $\Delta P$ 210 bar	Version $\Delta P$ 325 bar
86 KW	95 KW
220 L/mn	160 L/mn
980 KG	1220 KG
565 mm	565 mm
2 bar	2 bar

**STEEL or PLASTIC Integration VERSION :**

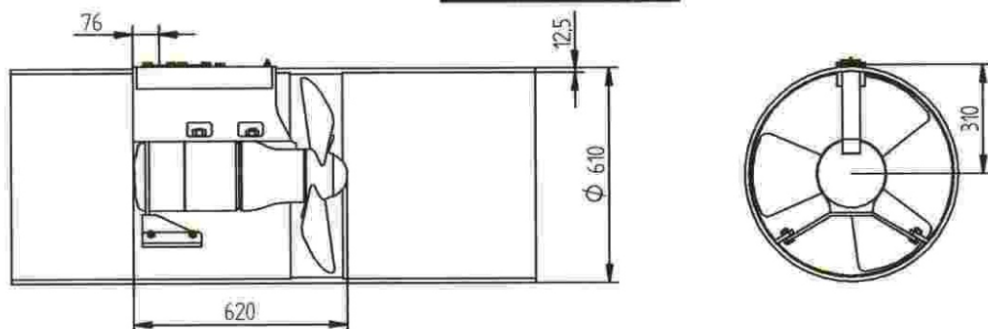
Tunnel Diameter 610 th 12.5mm  
 Longitudinal welded as API 5L grade B  
 Inox ferrule around propeller th: 4mm  
 Weight: 180Kg + 190Kg/tunnel metre

**ALUMINIUM VERSION :**

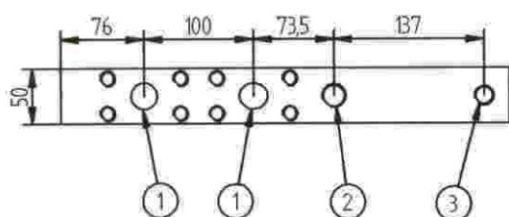
Tunnel diameter 610 th 12mm AG4  
 longitudinal Welded  
 Weight: 170Kg + 65Kg/tunnel metre



## DIMENSIONS



## CONNECTION PORTS



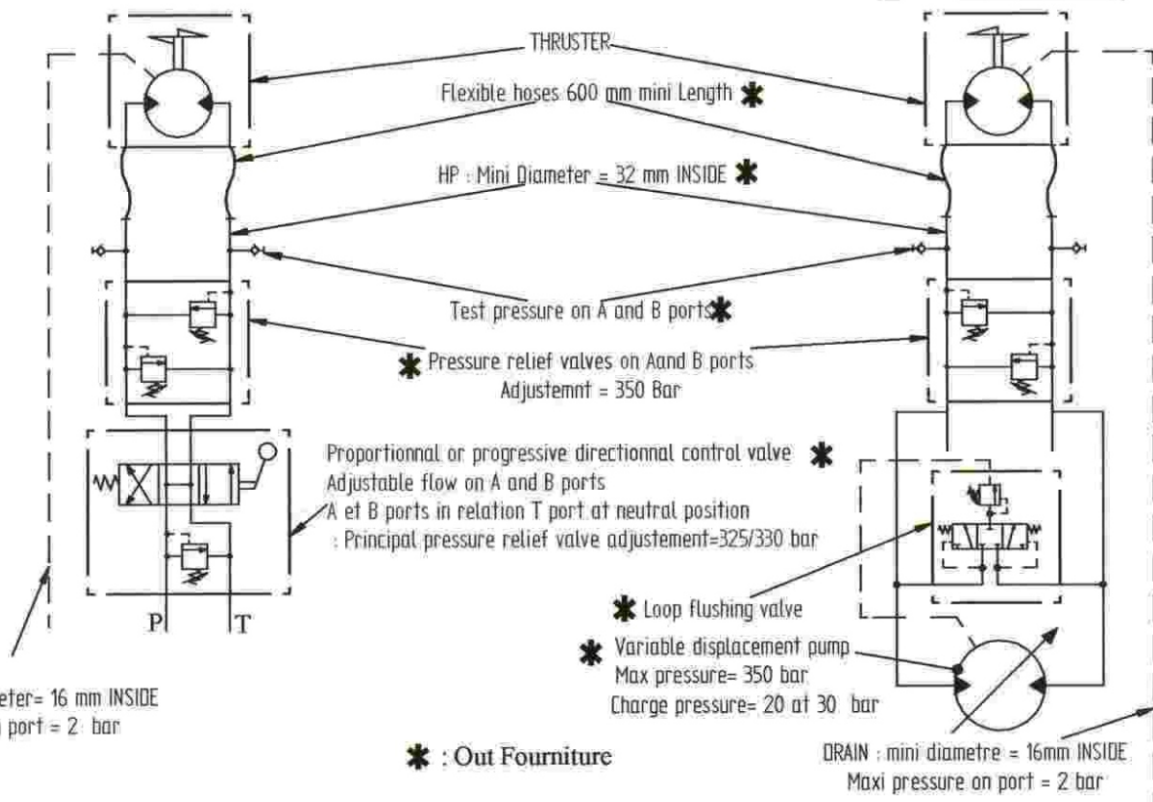
Rep 1: 2x HP: SAE 1"1/4-6000  
 Rep 2: 1xDRAIN: 1/2 Gaz Female  
 Rep 3: 1xGreasing: 1/4 Gaz Female

**NOTA:** in any case ports caps will not be dismantled before definitive connexion to prevent accidental pollutions

## HYDRAULIC DIAGRAM

### OPEN CIRCUIT

### CLOSED CIRCUIT



DRAIN: mini diameter= 16 mm INSIDE  
Max pressure on port = 2 bar

DRAIN : mini diameter= 16mm INSIDE  
Maxi pressure on port = 2 bar

**IMPORTANT:** minimum cleanliness circuit as NAS 1638 7 to 8 class (or 5 a 6 as ASTM)

Document N° 950-02

With reserve for modifications result to technicals progress : illustrations, dimensions, performances and weight are NOT CONTRACTUAL

Landeta Kalea 2, PB 8. Pol. Ind. Trobika - 48100 Mungia - BIZKAIA (Spain)  
Tel: 94 674 21 62 - Fax: 94 674 21 63 - E-mail: [lantekhidraulica@lantekhidraulica.com](mailto:lantekhidraulica@lantekhidraulica.com)



**LANTEK  
HIDRAULICA S.L.**  
Equipos y Sistemas Hidráulicos

## TRANSVERSE THRUSTER Type 1200

### DESCRIPTION:

Direct propeller driving by piston hydraulic motor

Easy installation and utilisation

Possibility of supply from existent board hydraulic unit

Bureau VERITAS classification possibility

Standard model: steel tunnel-Option: aluminium tunnel or tunnel for plastic integration

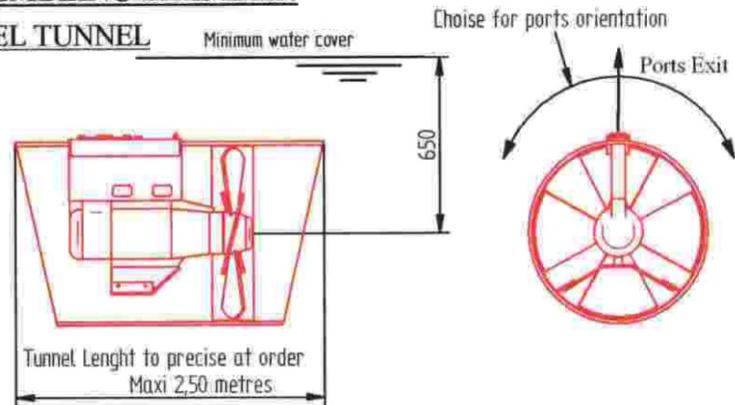
Propeller: 4 blades symmetric LHR or AG6

### TUNNEL VERSION

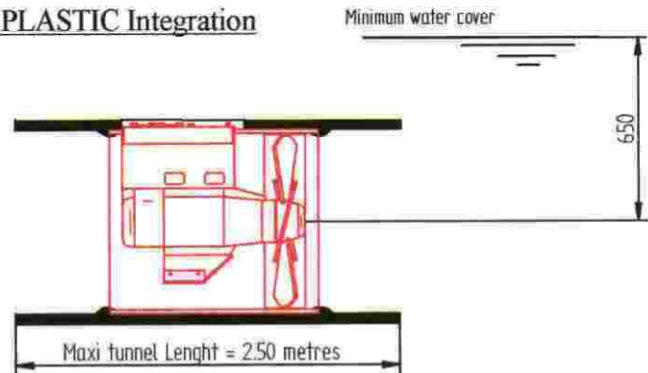


### ASSEMBLING EXAMPLE:

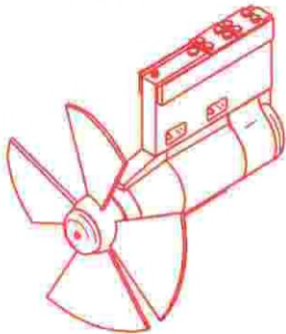
#### STEEL TUNNEL



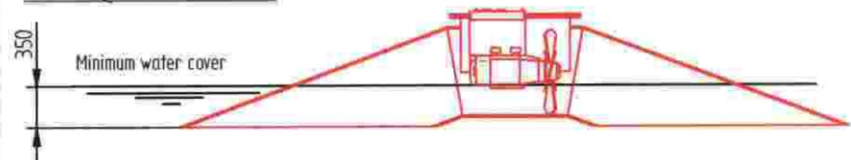
#### TUNNEL for PLASTIC Integration



### NAKED VERSION



#### OBLIQUE TUNNEL



### TECHNICAL CHARACTERISTICS

Max absorbed power for  $\Delta P$   
Max acceptable flow  
Max thrust + or- 10%  
Propeller diameter  
Max pressure on drain port

Version $\Delta P$ 210 bar	Version $\Delta P$ 300 bar
95 KW	103 KW
240 L/mn	185 L/mn
1080 KG	1280 KG
615 mm	615 mm
2 bar	2 bar

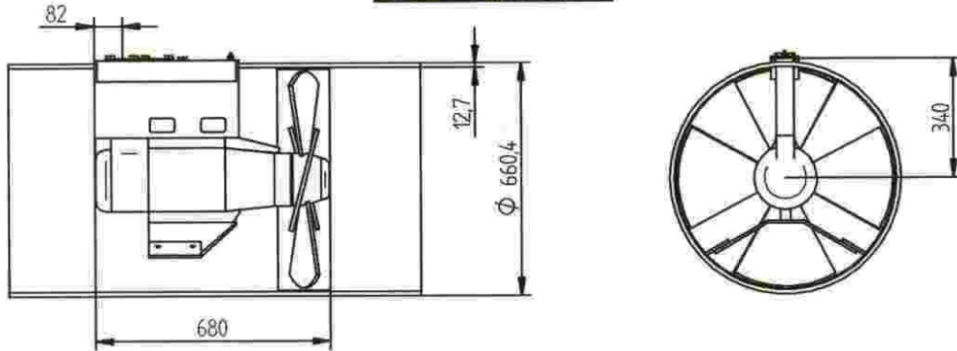
### STEEL or PLASTIC Integration VERSION :

Tunnel Diameter 660.4 th 12.7 mm  
Longitudinal welded as API 5L grade B  
Inox ferrule around propeller th: 4mm  
Weight: 210 Kg + 205 Kg/tunnel metre

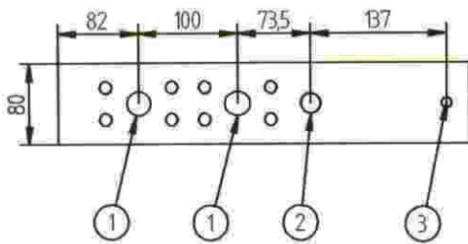
### ALUMINIUM VERSION :

Tunnel diameter 660 th 15 mm AG4  
longitudinal Welded  
Weight: 180Kg + 87 Kg/tunnel metre

## DIMENSIONS



## CONNECTION PORTS



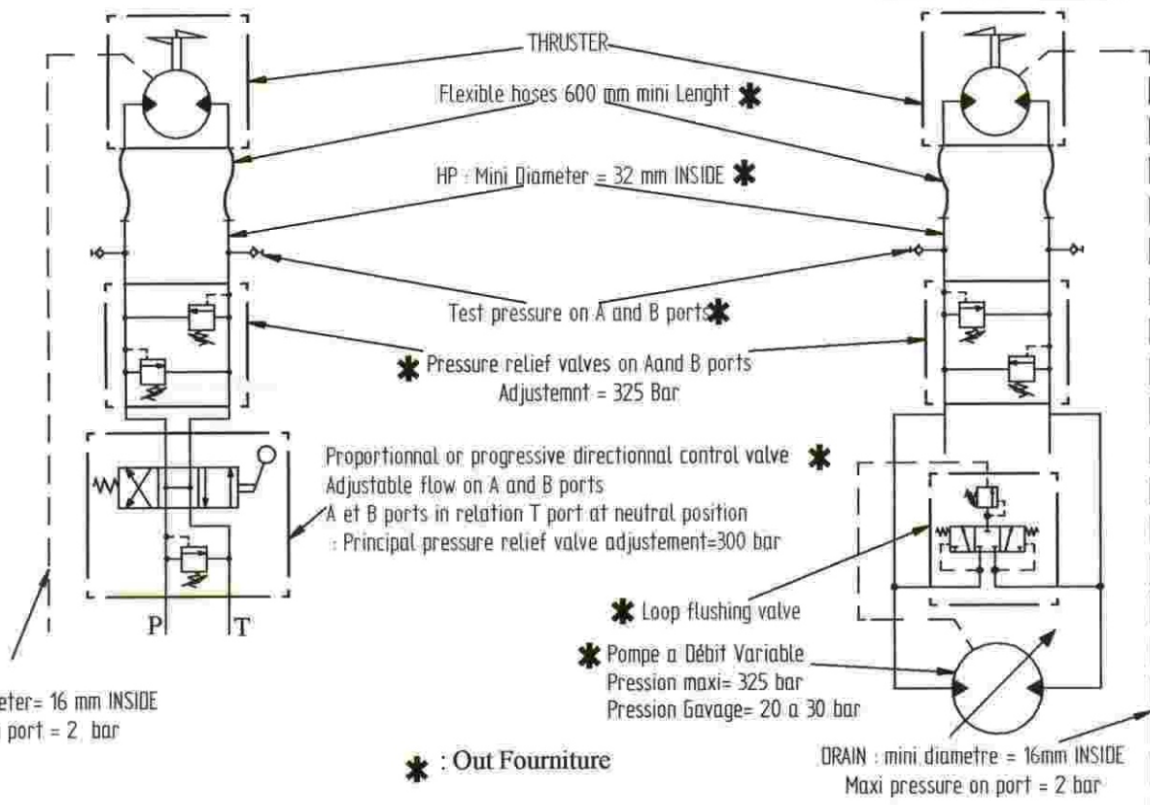
Rep 1: 2x HP: SAE 1"1/4-6000  
 Rep 2: 1xDRAIN: 1/2 Gaz Female  
 Rep 3: 1xGreasing: 1/4 Gaz Female

**NOTA:** in any case ports caps will not be dismantled before definitive connexion to prevent accidental pollutions

## HYDRAULIC DIAGRAM

### OPEN CIRCUIT

### CLOSED CIRCUIT



**IMPORTANT:** minimum cleanliness circuit as NAS 1638 7 to 8 class (or 5 a 6 as ASTM)

Document N° 1200-02

With reserve for modifications result to technicals progress : illustrations, dimensions, performances and weight are NOT CONTRACTUAL

Landeta Kalea, 2 PB 8 - Pol. Ind. Trobika - 48100 Mungia - BIZKAIA (Spain)  
 Tel: 94 674 21 62 - Fax: 94 674 21 63 - E-mail: [lantekhidraulica@lantekhidraulica.com](mailto:lantekhidraulica@lantekhidraulica.com)





**LANTEK  
HIDRAULICA S.L.**

Equipos y Sistemas Hidráulicos

**TRANSVERSE THRUSTER Type 1700**

**DESCRIPTION:**

Direct propeller driving by piston hydraulic motor

Easy installation and utilisation

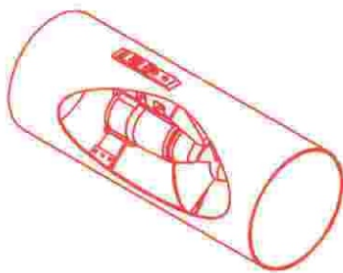
Possibility of supply from existent board hydraulic unit

Bureau VERITAS classification possibility

Standard model: steel tunnel-Option: aluminium tunnel or tunnel for plastic integration

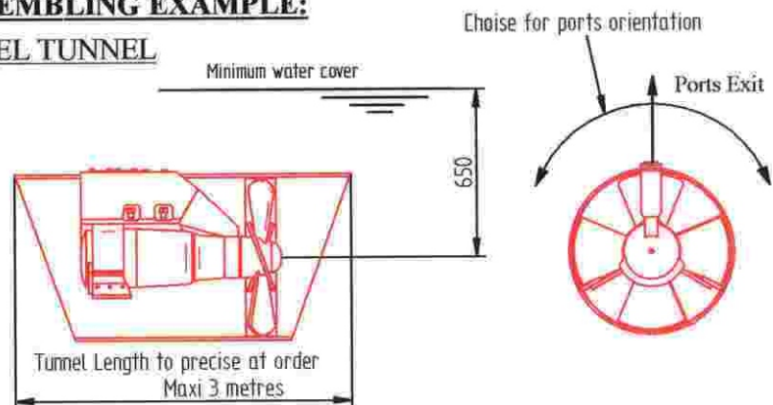
Propeller: 4 blades symmetric LHR or AG6

TUNNEL VERSION

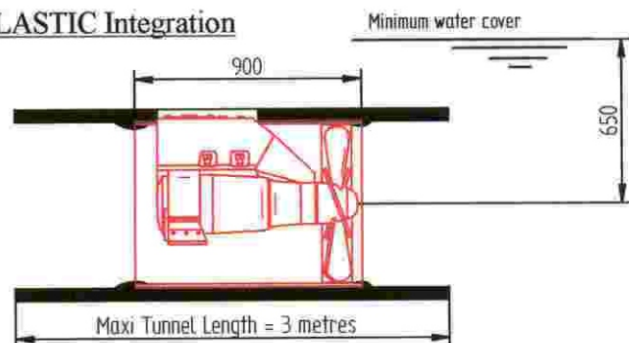


**ASSEMBLING EXAMPLE:**

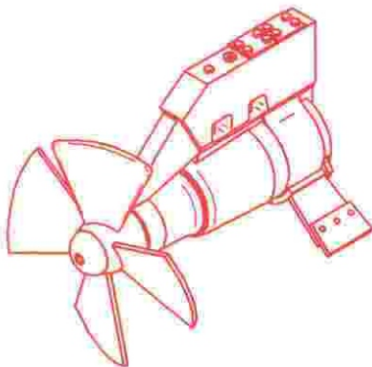
STEEL TUNNEL



TUNNEL for PLASTIC Integration



NAKED VERSION



OBLIQUE TUNNEL



**TECHNICAL CHARACTERISTICS**

- Max absorbed power for  $\Delta P$
- Max acceptable flow
- Max thrust + or- 10%
- Propeller diameter
- Max pressure on drain port

Version $\Delta P$ 210 bar	Version $\Delta P$ 325 bar
150 KW	150 KW
380 L/mn	250 L/mn
1750 KG	1950 KG
615 mm	615 mm
2 bar	2 bar

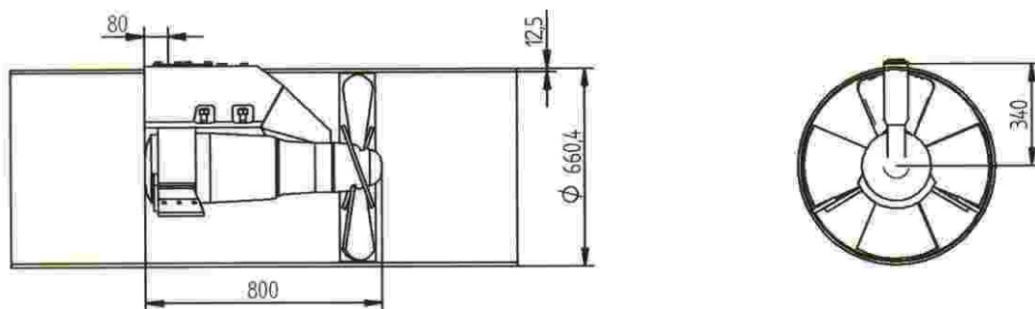
**STEEL or PLASTIC Integration VERSION :**

- Tunnel Diameter 660.4 th 12.7mm
- Longitudinal welded as API 5L grade B
- Inox ferrule around propeller th: 4mm
- Weight: 220Kg + 205Kg/tunnel metre

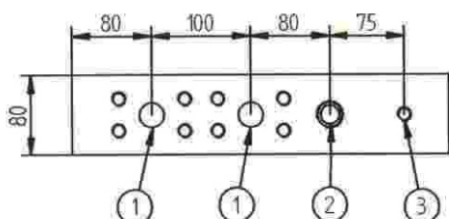
**ALUMINIUM VERSION :**

- Tunnel diameter 660 th 15 mm AG4
- longitudinal Welded
- Weight: 190Kg + 87Kg/tunnel metre

## DIMENSIONS



## CONNECTION PORTS



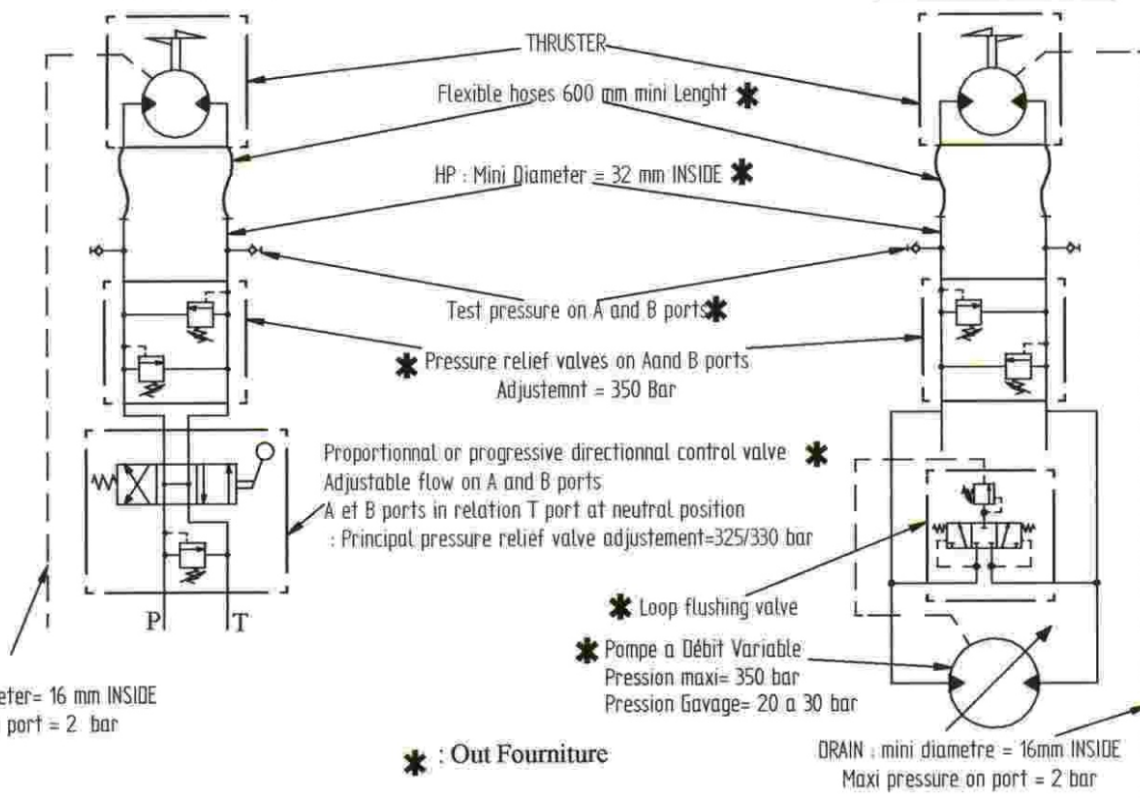
Rep 1: 2x HP: SAE 1"1/4-6000  
 Rep 2: 1xDRAIN: 3/4 Gaz Female  
 Rep 3: 1xGreasing: 1/4 Gaz Female

**NOTA:** in any case ports caps will not be dismantled before definitive connexion to prevent accidental pollutions

## HYDRAULIC DIAGRAM

### OPEN CIRCUIT

### CLOSED CIRCUIT



**IMPORTANT:** minimum cleanliness circuit as NAS 1638 7 to 8 class (or 5 a 6 as ASTM)

Document N° 1700-02

With reserve for modifications result to technicals progress : illustrations, dimensions, performances and weight are NOT CONTRACTUAL

Landeta Kalea, 2 PB 8 - Pol. Ind. Trobika - 48100 Mungia - BIZKAIA (Spain)  
 Tel: 94 674 21 62 - Fax: 94 674 21 63 - E-mail: [lantekhidraulica@lantekhidraulica.com](mailto:lantekhidraulica@lantekhidraulica.com)





## TRANSVERSE THRUSTER Type 2000

### DESCRIPTION:

Direct propeller driving by piston hydraulic motor

Easy installation and utilisation

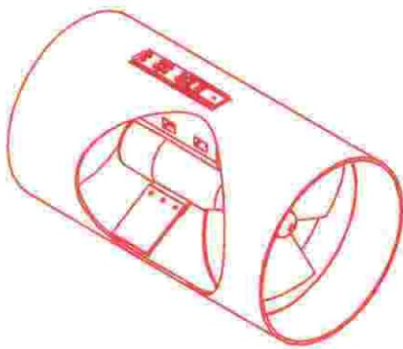
Possibility of supply from existent board hydraulic unit

Bureau VERITAS classification possibility

Standard model: steel tunnel-Option: aluminium tunnel or tunnel for plastic integration

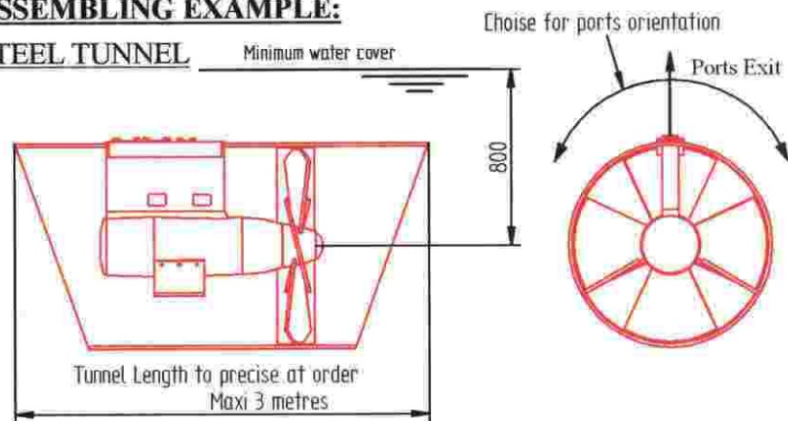
Propeller: 4 blades symetric LHR or AG6

### TUNNEL VERSION

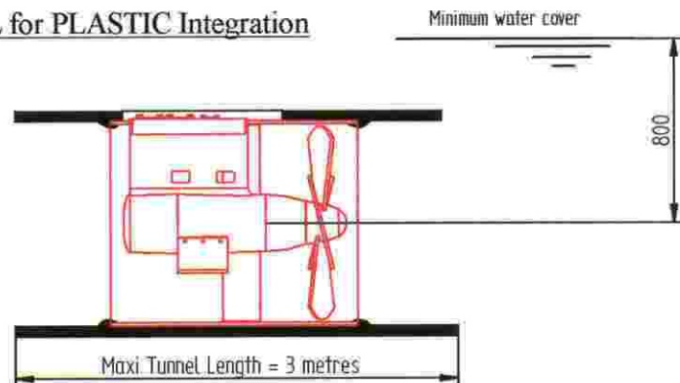


### ASSEMBLING EXAMPLE:

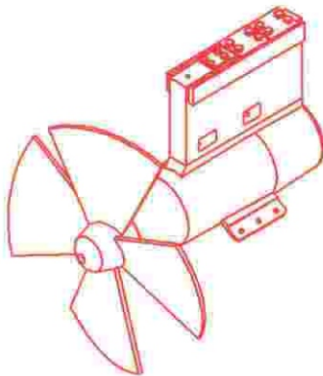
#### STEEL TUNNEL



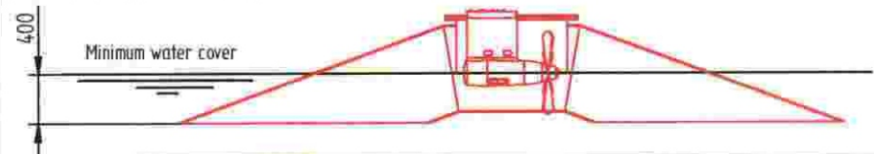
#### TUNNEL for PLASTIC Integration



### NAKED VERSION



#### OBLIQUE TUNNEL



### TECHNICAL CHARACTERISTICS

Max absorbed power for  $\Delta P$

Max acceptable flow

Max thrust + or- 10%

Propeller diameter

Max pressure on drain port

Version $\Delta P$ 210 bar	Version $\Delta P$ 325 bar
162 KW	191 KW
420 L/mn	320 L/mn
1900 KG	2400 KG
765 mm	765 mm
2 bar	2 bar

### STEEL or PLASTIC Integration VERSION :

Tunnel Diameter 812.8 th 12.7mm

Longitudinal welded as API 5L grade B

Inox ferrule around propeller th: 4mm

Weight: 350Kg + 250Kg/tunnel metre

### ALUMINIUM VERSION :

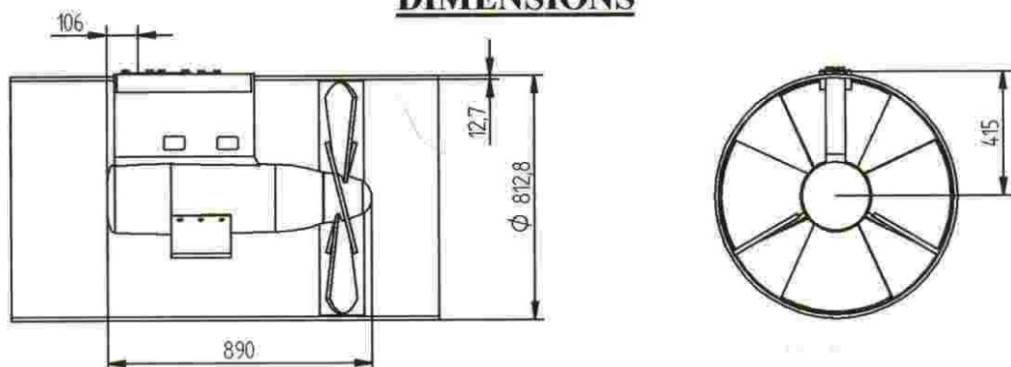
Tunnel diameter 810 th 16 mm AG4

longitudinal Welded

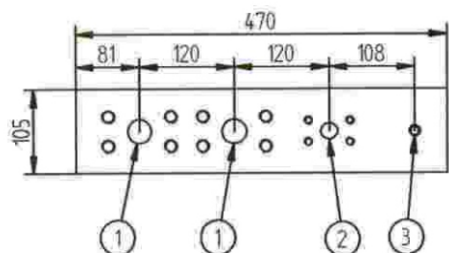
Weight: 320Kg + 115Kg/tunnel metre



## DIMENSIONS



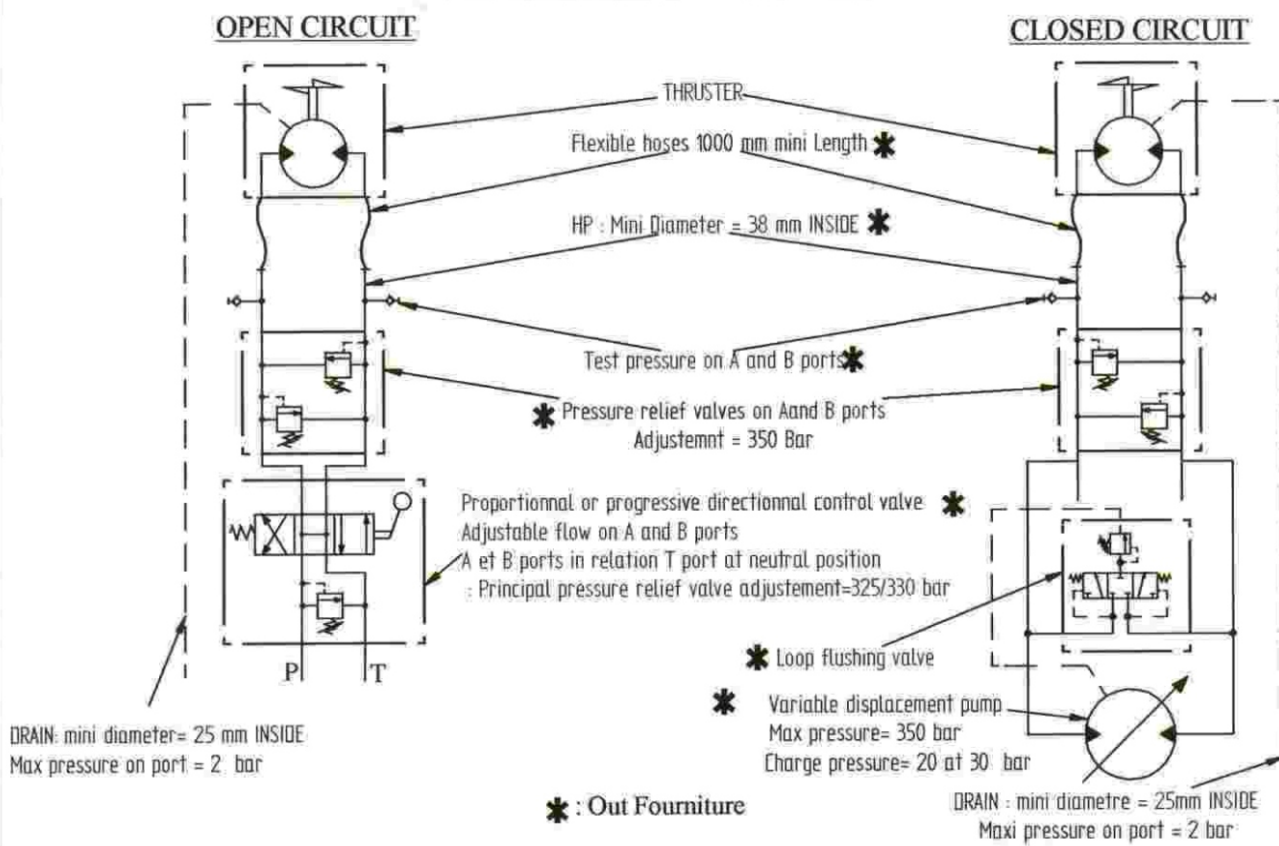
## CONNECTION PORTS



Rep 1: 2x HP: SAE 1"1/2-6000  
 Rep 2: 1xDRAIN: SAE 1"-3000  
 Rep 3: 1xGreasing: 3/8 Gaz Female

**NOTA:** in any case ports caps will not be dismantled before definitive connexion to prevent accidental pollutions

## HYDRAULIC DIAGRAM



**IMPORTANT:** minimum cleanliness circuit as NAS 1638 7 to 8 class (or 5 a 6 as ASTM)

Document N° 2000-02

With reserve for modifications result to technicals progress : illustrations, dimensions, performances and weight are NOT CONTRACTUAL

Landeta Kalea, 2 PB 8 - Pol. Ind. Trobika - 48100 Mungia - BIZKAIA (Spain)  
 Tel: 94 674 21 62 - Fax: 94 674 21 63 - E-mail: [lantekhidraulica@lantekhidraulica.com](mailto:lantekhidraulica@lantekhidraulica.com)



**LANTEK**  
**HIDRAULICA S.L.**  
 Equipos y Sistemas Hidráulicos

## TRANSVERSE THRUSTER Type 2400

### DESCRIPTION:

Direct propeller driving by piston hydraulic motor

Easy installation and utilisation

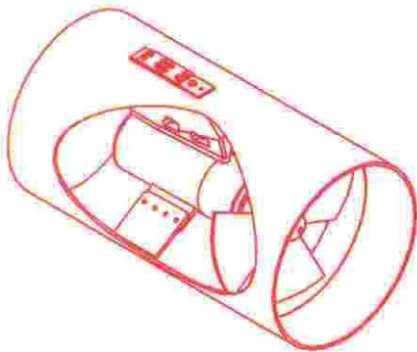
Possibility of supply from existent board hydraulic unit

Bureau VERITAS classification possibility

Standard model: steel tunnel-Option: aluminium tunnel or tunnel for plastic integration

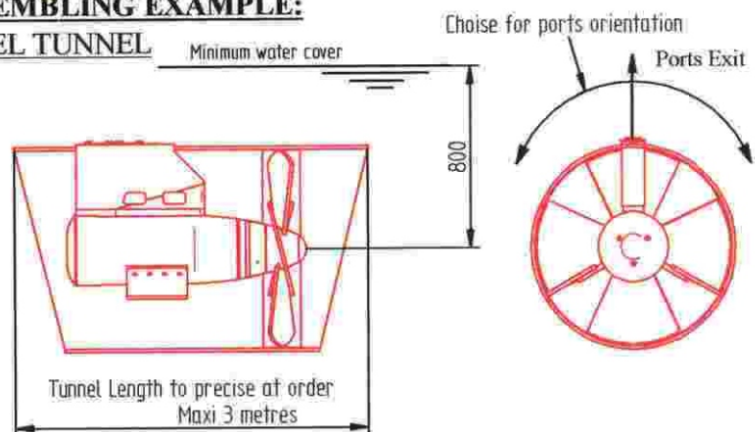
Propeller: 4 blades symmetric LHR or AG6

### TUNNEL VERSION



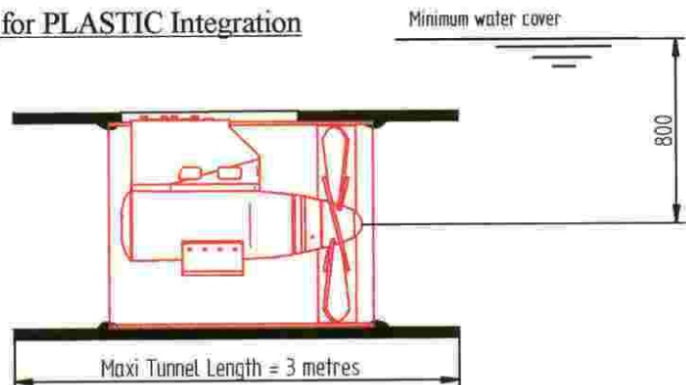
### ASSEMBLING EXAMPLE:

#### STEEL TUNNEL

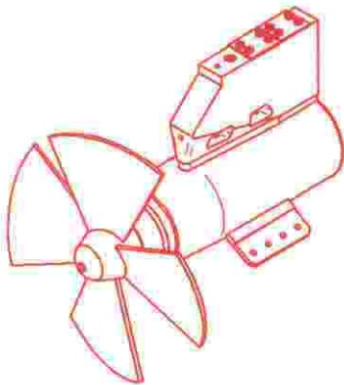


Tunnel Length to precise at order  
 Maxi 3 metres

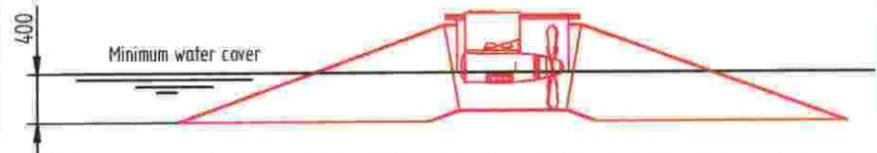
#### TUNNEL for PLASTIC Integration



### NAKED VERSION



#### OBLIQUE TUNNEL



### TECHNICAL CHARACTERISTICS

Max absorbed power for  $\Delta P$

Max acceptable flow

Max thrust + or- 10%

Propeller diameter

Max pressure on drain port

Version $\Delta P$ 210 bar	Version $\Delta P$ 325 bar
215 KW	230 KW
550 L/mn	380 L/mn
2600KG	2900 KG
765 mm	765 mm
2 bar	2 bar

### STEEL or PLASTIC Integration VERSION :

Tunnel Diameter 812.8 th 12.7mm

Longitudinal welded as API 5L grade B

Inox ferrule around propeller th: 4mm

Weight: 400Kg + 250Kg/tunnel metre

### ALUMINIUM VERSION :

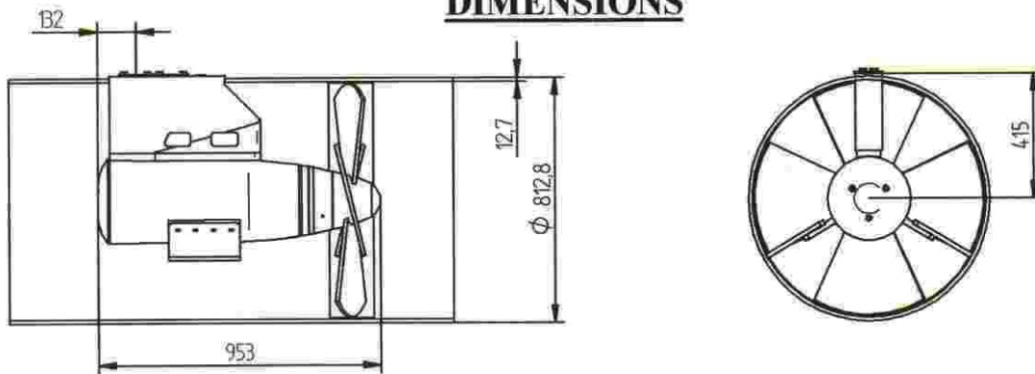
Tunnel diameter 810 th 16 mm AG4

longitudinal Welded

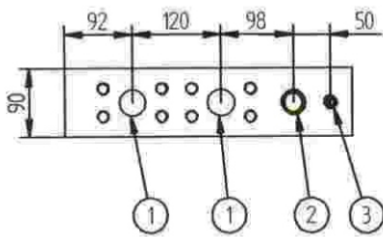
Weight: 380Kg + 115Kg/tunnel metre



## DIMENSIONS



## CONNECTION PORTS



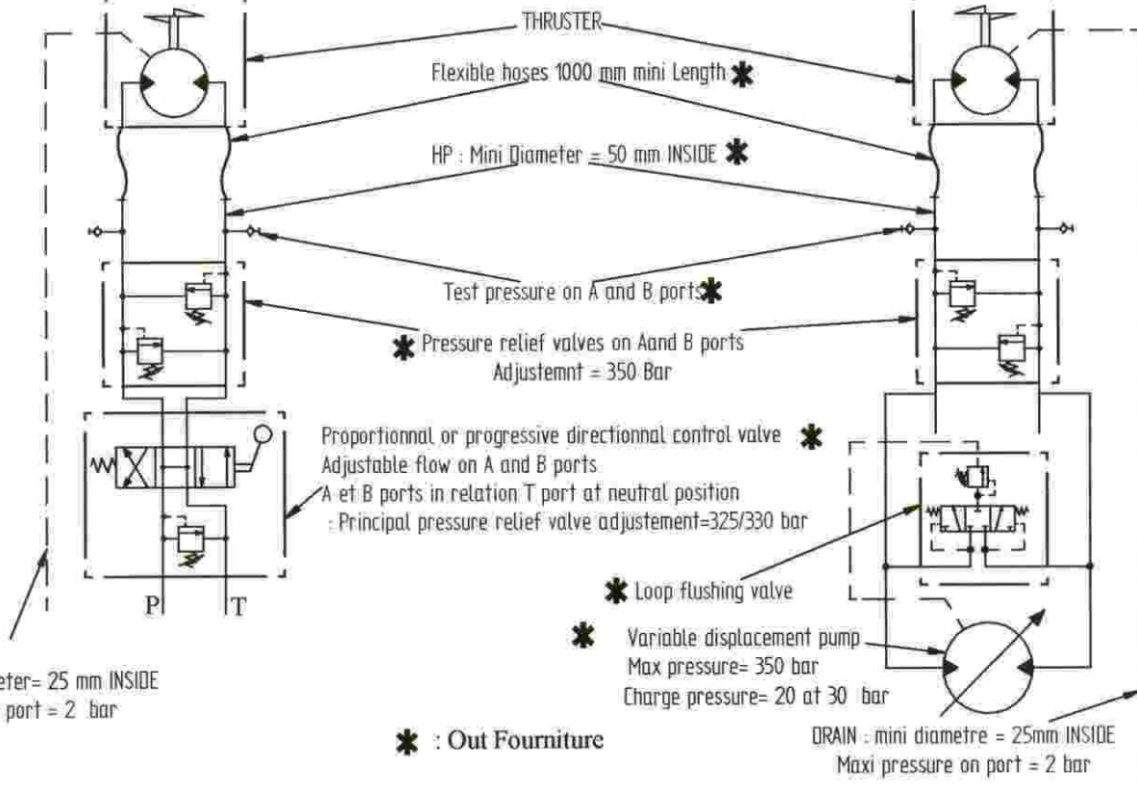
Rep 1: 2x HP: SAE 1"1/2-6000  
 Rep 2: 1xDRAIN: 1" Gaz Female  
 Rep 3: 1xGreasing : 3/8 Gaz Female

**NOTA:** in any case ports caps will not be dismantled before definitive connexion to prevent accidental pollutions

## HYDRAULIC DIAGRAM

### OPEN CIRCUIT

### CLOSED CIRCUIT



DRAIN: mini diameter= 25 mm INSIDE  
 Max pressure on port = 2 bar

**IMPORTANT:** minimum cleanliness circuit as NAS 1638 7 to 8 class (or 5 a 6 as ASTM)

Document N° 2400-02

With reserve for modifications result to technicals progress : illustrations, dimensions, performances and weight are NOT CONTRACTUAL

Landeta Kalea, 2 PB 8 - Pol. Ind. Trobika - 48100 Mungia - BIZKAIA (Spain)  
 Tel: 94 674 21 62 - Fax: 94 674 21 63 - E-mail: lantekhidraulica@lantekhidraulica.com

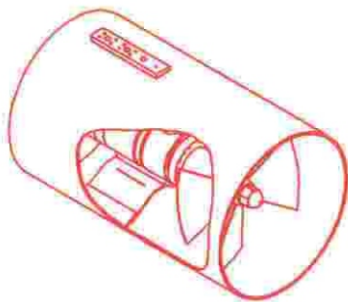


## TRANSVERSE THRUSTER Type 2800

**DESCRIPTION:**

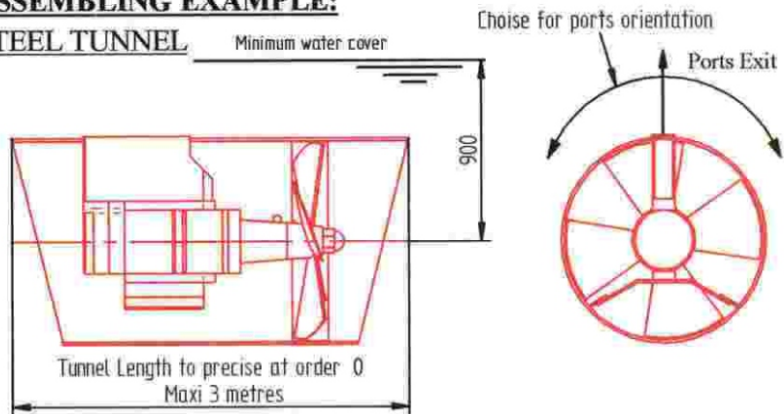
- Direct propeller driving by piston hydraulic motor
- Easy installation and utilisation
- Possibility of supply from existent board hydraulic unit
- Bureau VERITAS classification possibility
- Standard model: steel tunnel-Option: aluminium tunnel or tunnel for plastic integration
- Propeller: 4 blades symetric LHR or AG6

TUNNEL VERSION

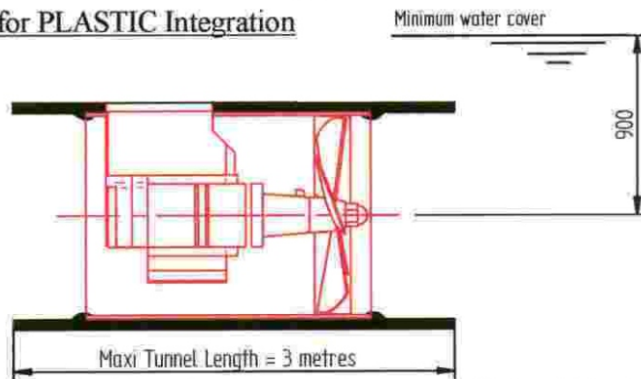


**ASSEMBLING EXAMPLE:**

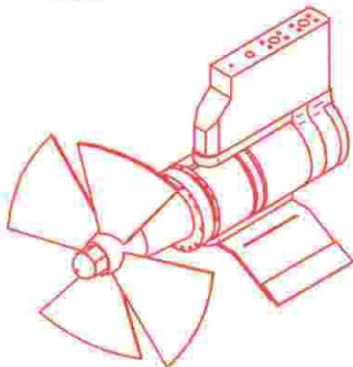
STEEL TUNNEL



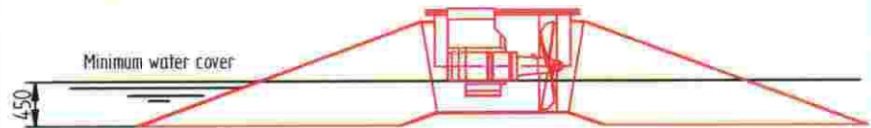
TUNNEL for PLASTIC Integration



NAKED VERSION



OBLIQUE TUNNEL



**TECHNICAL CHARACTERISTICS**

- Max absorbed power for  $\Delta P$
- Max acceptable flow
- Max thrust + or- 10%
- Propeller diameter
- Max pressure on drain port

Version $\Delta P$ 210 bar	Version $\Delta P$ 325 bar
	272 KW
	450 L/mn
sur Demande	3300 KG
	870 mm
	2 bar

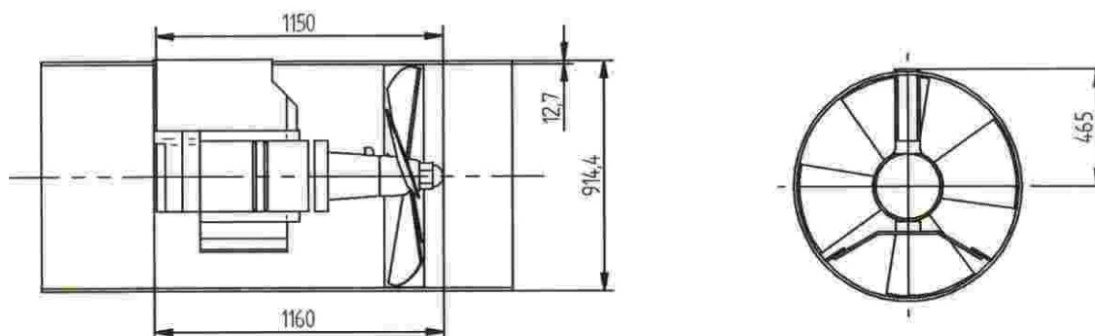
**STEEL or PLASTIC Integration VERSION :**

- Tunnel Diameter 914.4 th 12.7mm
- Longitudinal welded as API 5L grade B
- Inox ferrule around propeller th: 4mm
- Weight: 550Kg + 280Kg/tunnel metre

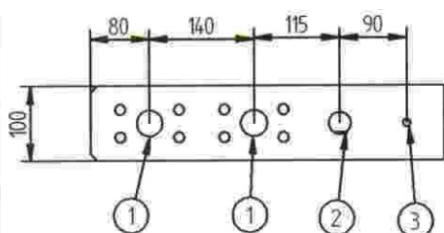
**ALUMINIUM VERSION :**

- Tunnel diameter 915 th 16 mm AG4
- longitudinal Welded
- Weight: 510Kg + 130Kg/tunnel metre

## DIMENSIONS



## CONNECTION PORTS



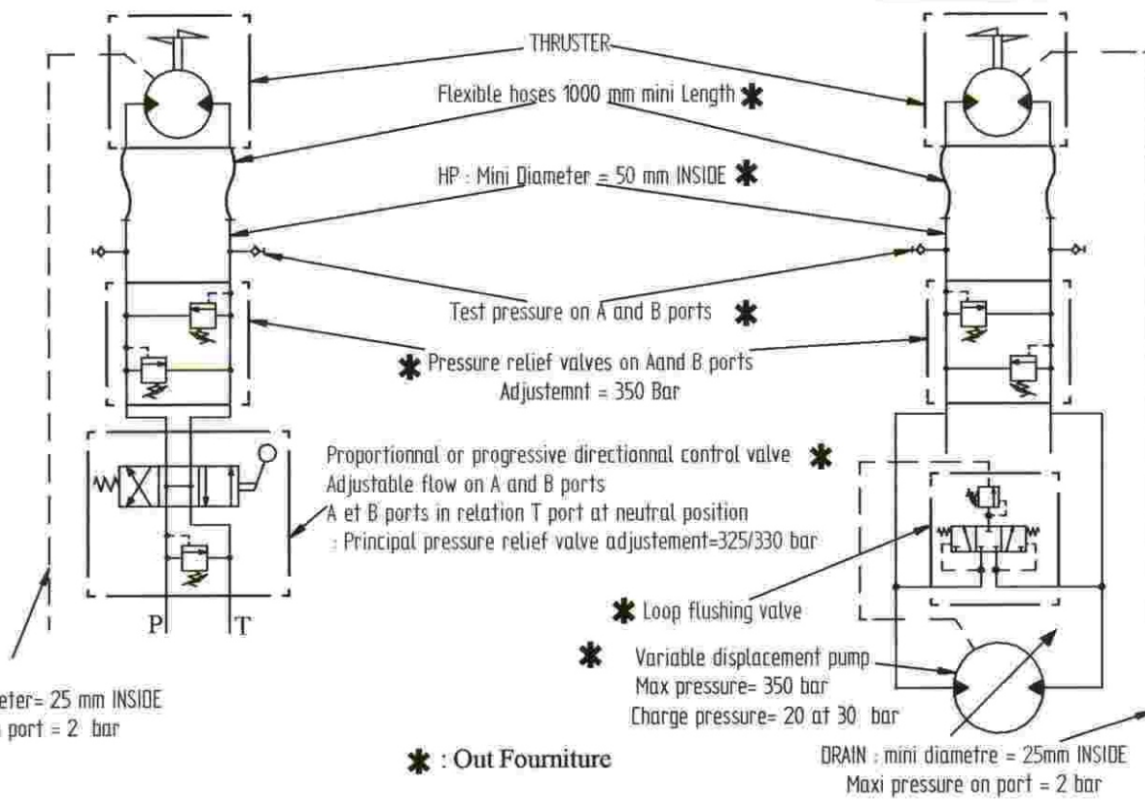
Rep 1: 2x HP: SAE 1"1/2-6000  
 Rep 2: 1xDRAIN: 1"1/4 Gaz Female  
 Rep 3: 1xGreasing: 3/8 Gaz Female

**NOTA:** in any case ports caps will not be dismantled before definitive connexion to prevent accidental pollutions

## HYDRAULIC DIAGRAM

### OPEN CIRCUIT

### CLOSED CIRCUIT



DRAIN: mini diameter= 25 mm INSIDE  
Max pressure on port = 2 bar

DRAIN : mini diameter = 25mm INSIDE  
Maxi pressure on part = 2 bar

**IMPORTANT:** minimum cleanliness circuit as NAS 1638 7 to 8 class (or 5 a 6 as ASTM)

Document N° 2800-02

With reserve for modifications result to technicals progress : illustrations, dimensions, performances and weight are NOT CONTRACTUAL

Landeta Kalea 2, PB 8 - Pol. Ind. Trobika - 48100 Mungia - BIZKAIA (Spain)  
 Tel: 94 674 21 62 - Fax: 94 674 21 63 - E-mai: [lantekhidraulica@lantekhidraulica.com](mailto:lantekhidraulica@lantekhidraulica.com)





**LANTEK  
HIDRAULICA S.L.**

Equipos y Sistemas Hidráulicos

**TRANSVERSE THRUSTER Type 3500**

**DESCRIPTION:**

Direct propeller driving by piston hydraulic motor

Easy installation and utilisation

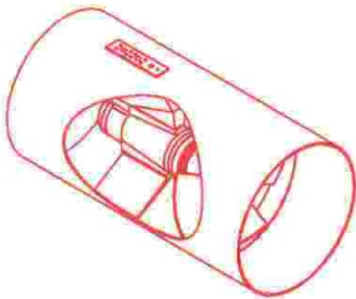
Possibility of supply from existent board hydraulic unit

Bureau VERITAS classification possibility

Standard model: steel tunnel-Option: aluminium tunnel or tunnel for plastic integration

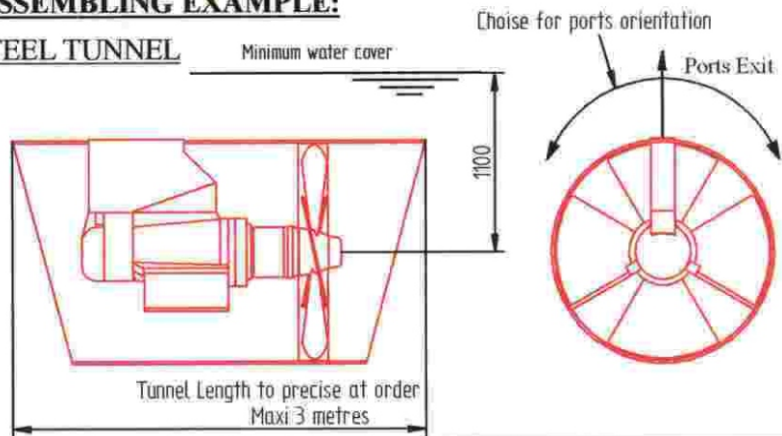
Propeller: 4 blades symmetric LHR or AG6

TUNNEL VERSION

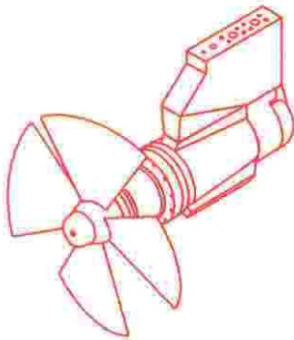


**ASSEMBLING EXAMPLE:**

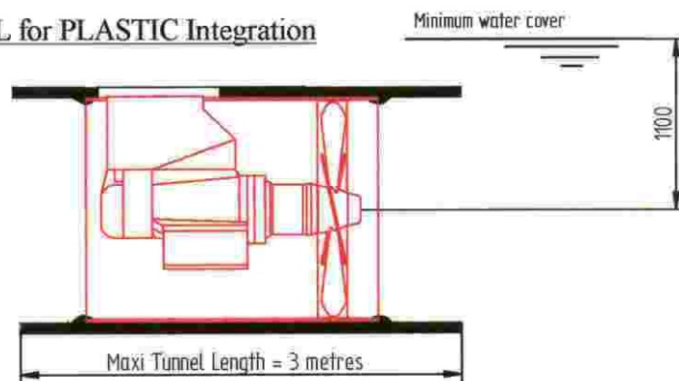
STEEL TUNNEL



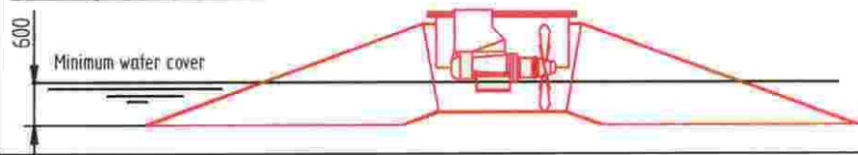
NAKED VERSION



TUNNEL for PLASTIC Integration



OBLIQUE TUNNEL



**TECHNICAL CHARACTERISTICS**

Max absorbed power for  $\Delta P$

Max acceptable flow

Max thrust + or- 10%

Propeller diameter

Max pressure on drain port

Version $\Delta P$ 210 bar	Version $\Delta P$ 325 bar
270 KW	312 KW
700 L/mn	500 L/mn
3300 KG	3800 KG
1070 mm	1070 mm
2 bar	2 bar

**STEEL or PLASTIC Integration VERSION :**

Tunnel Diameter 1117.6 th 12.7mm

Longitudinal welded as API 5L grade B

Inox ferrule around propeller th: 4mm

Weight: 700Kg + 346Kg/tunnel metre

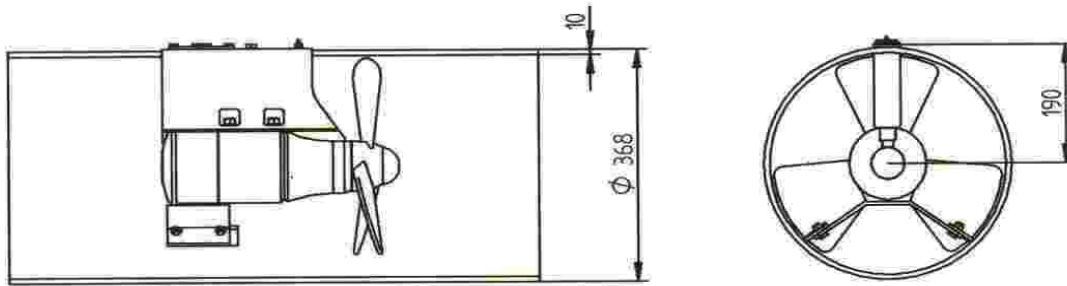
**ALUMINIUM VERSION :**

Tunnel diameter 1120 th 18 mm AG4

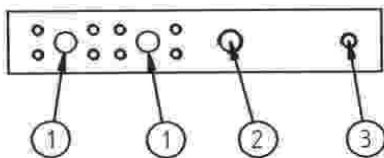
longitudinal Welded

Weight: 650Kg + 180Kg/tunnel metre

## DIMENSIONS



## CONNECTION PORTS



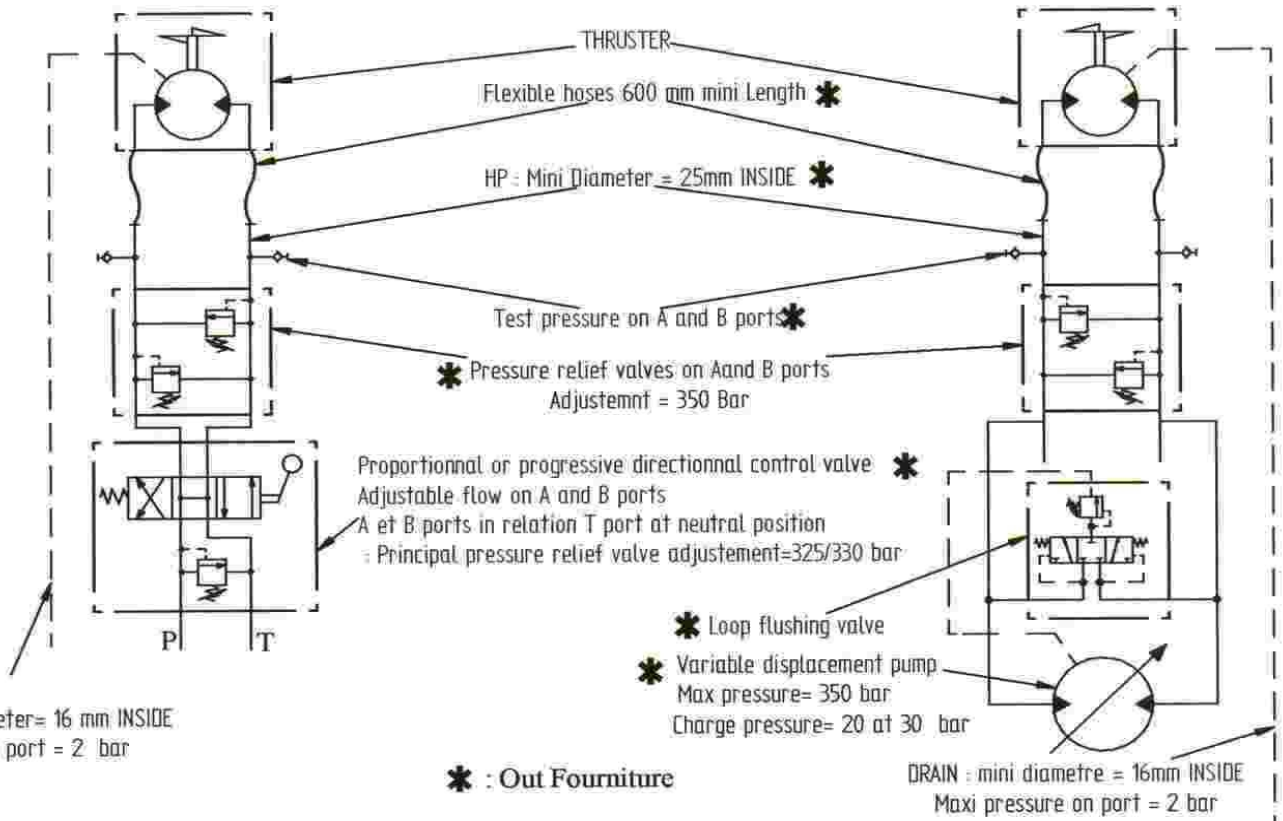
Rep 1: 2x HP: SAE 3/4-6000  
 Rep 2: 1xDRAIN: 3/8 Gaz Female  
 Rep 3: 1xGreasing : 1/4 Gaz Female

**NOTA:** in any case ports caps will not be dismantled before definitive connexion to prevent accidental pollutions

## HYDRAULIC DIAGRAM

### OPEN CIRCUIT

### CLOSED CIRCUIT



DRAIN: mini diameter= 16 mm INSIDE  
Max pressure on port = 2 bar

DRAIN : mini diametre = 16mm INSIDE  
Maxi pressure on port = 2 bar

**IMPORTANT:** minimum cleanliness circuit as NAS 1638 7 to 8 class (or 5 a 6 as ASTM)

Document N° 500-02 Preliminary

With reserve for modifications result to technicals progress : illustrations, dimensions, performances and weight are NOT CONTRACTUAL

Landeta Kalea, 2 PB 8 - Pol. Ind. Trobika - 48100 Mungia - BIZKAIA (Spain)  
 Tel: 94 674 21 62 - Fax: 94 674 21 63 - E-mail: lantekhidraulica@lantekhidraulica.com





**LANTEK  
HIDRAULICA S.L.**

Equipos y Sistemas Hidráulicos

**TRANSVERSE THRUSTER Type 4000**

**DESCRIPTION:**

Direct propeller driving by piston hydraulic motor

Easy installation and utilisation

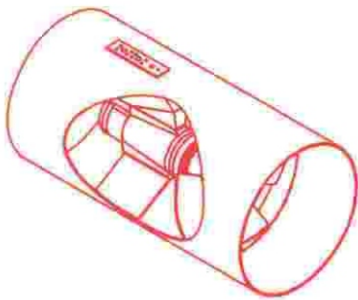
Possibility of supply from existent board hydraulic unit

Bureau VERITAS classification possibility

Standard model: steel tunnel-Option: aluminium tunnel or tunnel for plastic integration

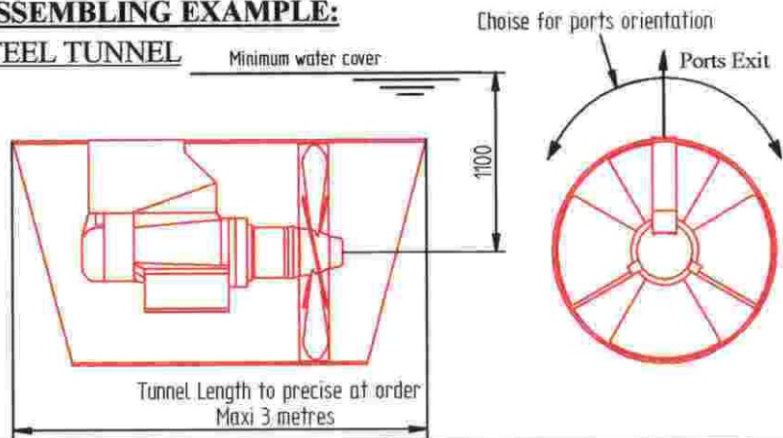
Propeller: 4 blades symetric LHR or AG6

TUNNEL VERSION



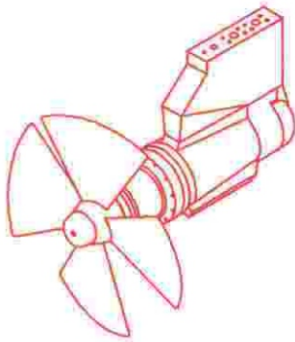
**ASSEMBLING EXAMPLE:**

STEEL TUNNEL

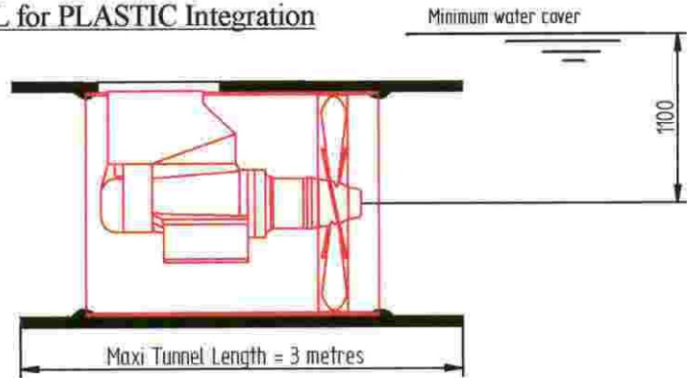


Tunnel Length to precise at order  
Maxi 3 metres

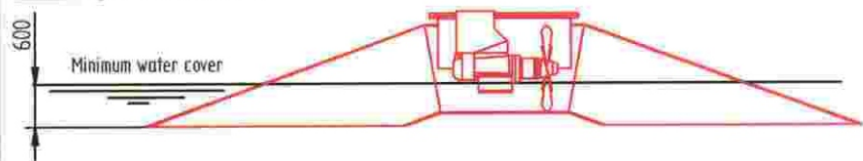
NAKED VERSION



TUNNEL for PLASTIC Integration



OBLIQUE TUNNEL



**TECHNICAL CHARACTERISTICS**

Max absorbed power for  $\Delta P$

Max acceptable flow

Max thrust + or- 10%

Propeller diameter

Max pressure on drain port

	Version $\Delta P$ 210 bar	Version $\Delta P$ 325 bar
sur Demande		385 KW 640 L/mn 4800 KG 1075 mm 2 bar

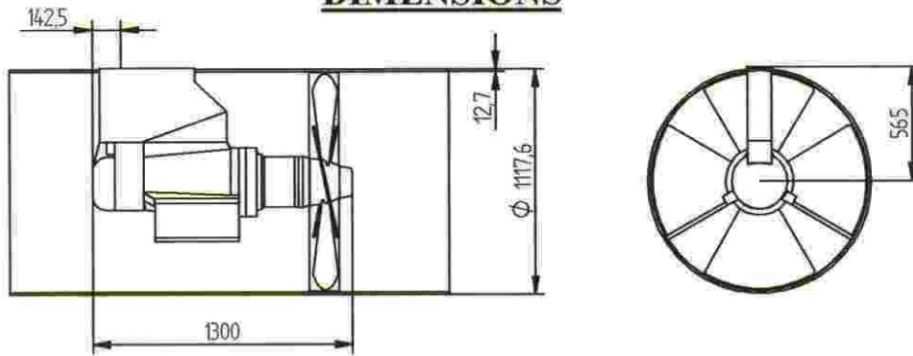
**STEEL or PLASTIC Integration VERSION :**

Tunnel Diameter 1117.6 th 12.7mm  
Longitudinal welded as API 5L grade B  
Inox ferrule around propeller th: 4mm  
Weight: 700Kg + 346Kg/tunnel metre

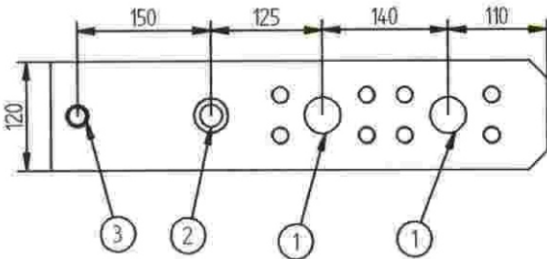
**ALUMINIUM VERSION :**

Tunnel diameter 1120 th 18 mm AG4  
longitudinal Welded  
Weight: 650Kg + 180Kg/tunnel metre

## DIMENSIONS



## CONNECTION PORTS



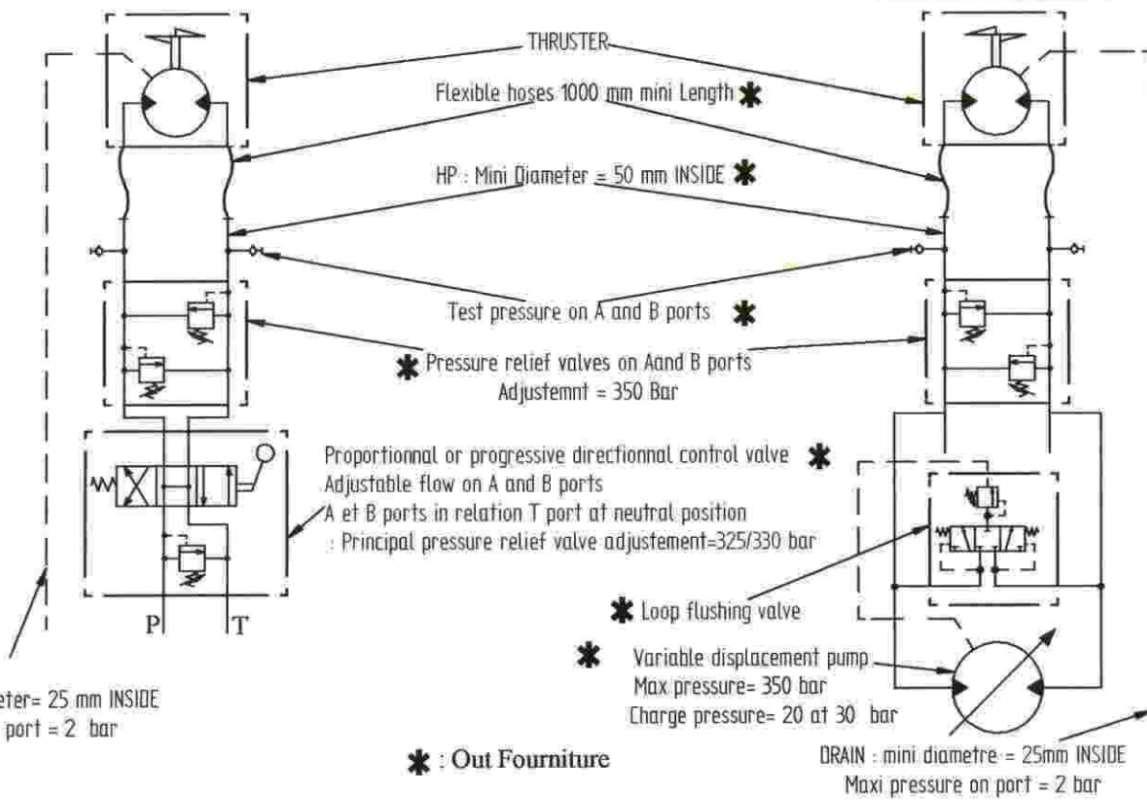
Rep 1: 2x HP: SAE 2"-6000  
 Rep 2: 1xDRAIN: 1" 1/4 Gaz Female  
 Rep 3: 1xGreasing: 3/4" Gaz Female

**NOTA:** in any case ports caps will not be dismantled before definitive connexion to prevent accidental pollutions

## HYDRAULIC DIAGRAM

### OPEN CIRCUIT

### CLOSED CIRCUIT



**IMPORTANT:** minimum cleanliness circuit as NAS 1638 7 to 8 class (or 5 a 6 as ASTM)

Document N° 4000-02

With reserve for modifications result to technicals progress : illustrations, dimensions, performances and weight are NOT CONTRACTUAL

Landeta Kalea 2, PB 8 - Pol. Ind. Trobika - 48100 Mungia - BIZKAIA (Spain)  
 Tel: 94 674 21 62 - Fax: 94 674 21 63 - E-mail: lantekhidraulica@lantekhidraulica.com